

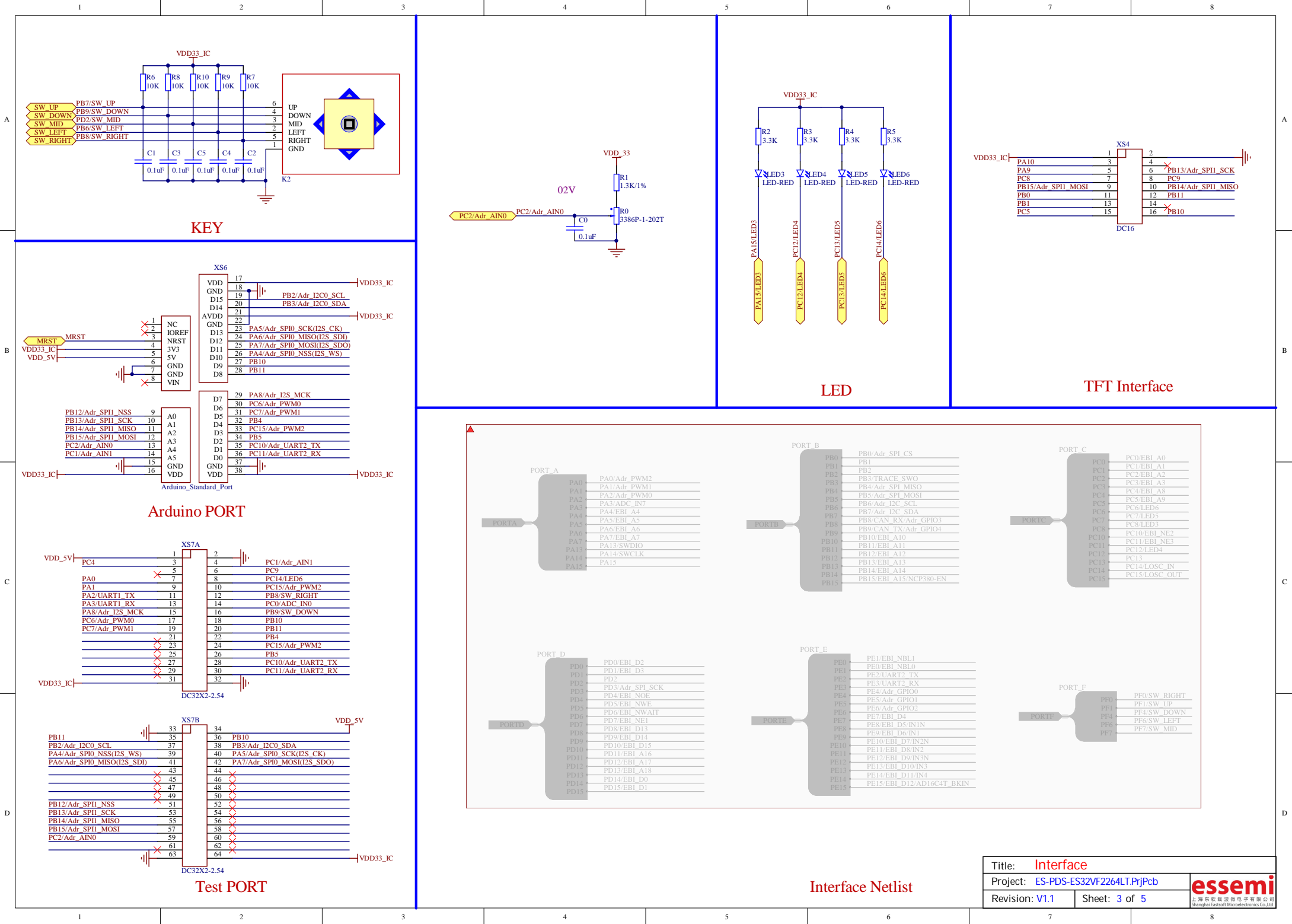
# ES-PDS-ES32VF2264LT.PrjPcb

## 版本记录

T1:测试1版

T2:测试2版——SCH修改：1) Power.SchDoc USB接口预留上下拉电阻。2) 晶振改成8M。  
PCB修改：1) 屏幕接口往左移动2mm。2) 外侧LOGO往内移动2mm。

Title: <b>Cover</b>		
Project: <b>ES-PDS-ES32VF2264LT.PrjPcb</b>		<b>essemi</b> 上海东软载波微电子有限公司 Shanghai Eastsoft Microelectronics Co.,Ltd.
Revision: <b>V1</b>	Sheet: <b>1 of 5</b>	



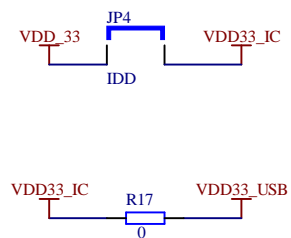
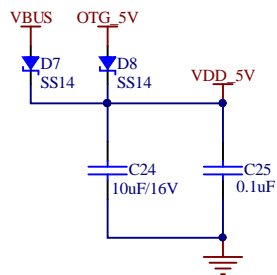


1

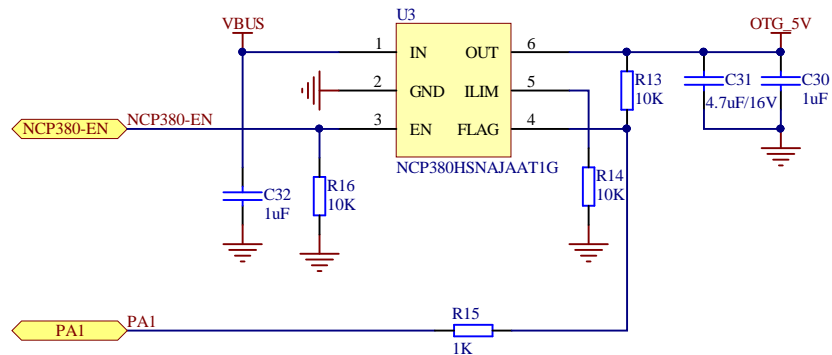
2

3

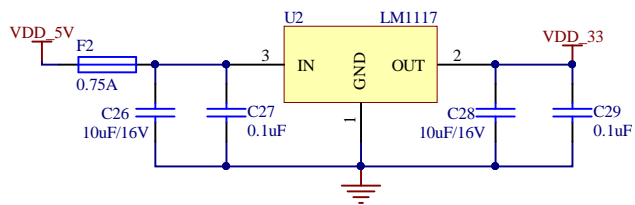
4



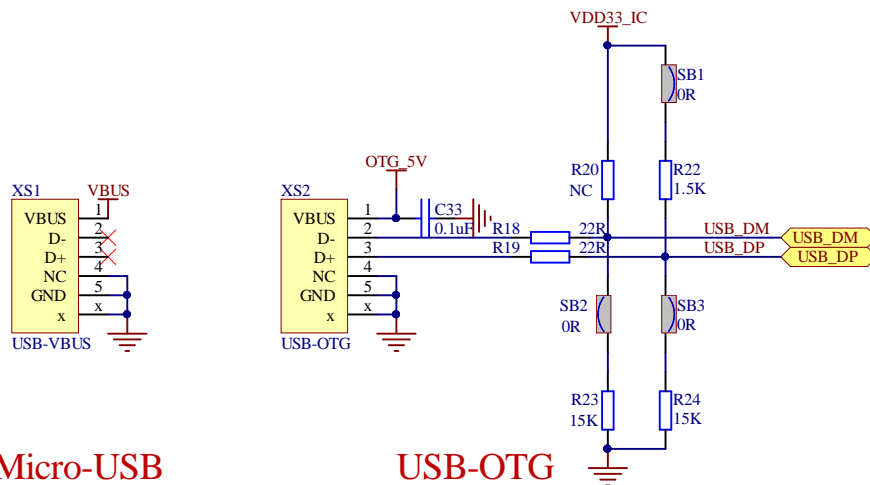
Power\_Switch



OTG\_Power\_Switch

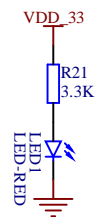


LDO

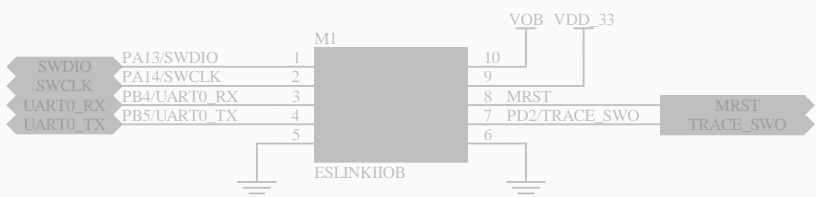


Micro-USB


USB-OTG



Power\_LED



DAP-Link

Title: Power			 上海东软载微电子有限公司 Shanghai Eastsoft Microelectronics Co., Ltd.
Project: ES-PDS-ES32VF2264LT.PrjPcb			
Revision: V1.1	Sheet: 5 of 5		

1

2

3

4